

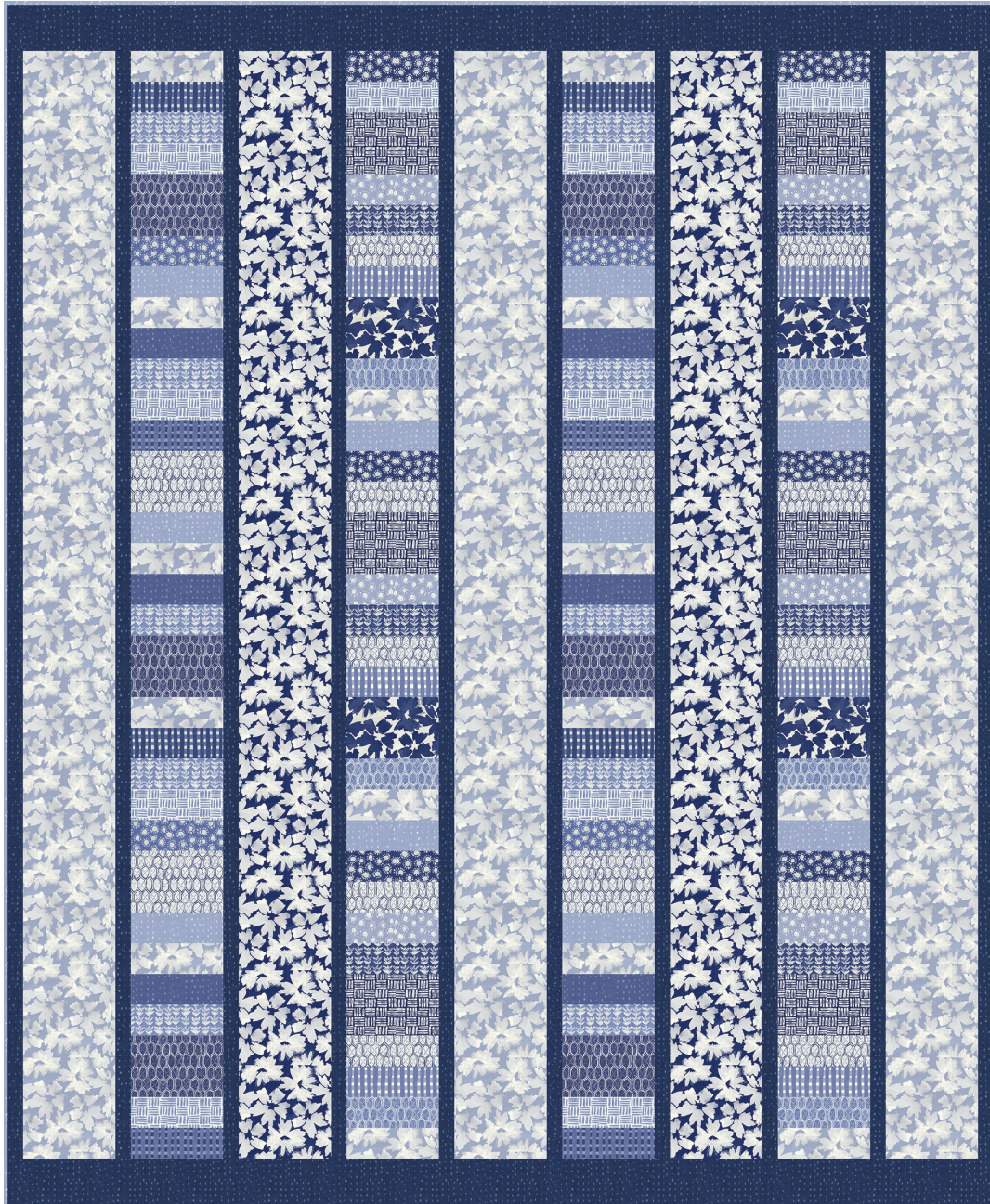
Ella

Sky High

Designed by Heidi Pridemore

Featuring the Ella Collection by Whistler Studios

Size: 64" x 78"



Check www.windhamfabrics.com Free Project section to see if there are any pattern updates before you start your quilt project



WINDHAM FABRICS

812 Jersey Ave – Jersey City, NJ 07310 – 201.659.0444 ~ FAX: 201.659.9719
www.windhamfabrics.com email: retail@windhamfabrics.com

Sky High

Page 2

Estimated Fabric Requirements:

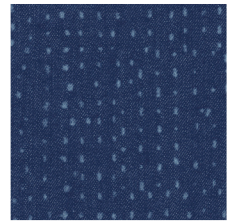
- 1 ½ yards – 41852-3 Light Blue
- 7/8 yard – 41852-2 White
- 1 ¼ yards – 41856-1 Dark Blue
- 7/8 yard – 41856-3 Light Blue
- 1/8 yard – 41853-1 Dark Blue
- ¼ yard – 41854-3 Light Blue
- ¼ yard – 41857-3 Light Blue
- ¼ yard – 41858-1 Dark Blue
- 1/8 yard – 41855-4 Medium Blue
- 1/8 yard – 41856-4 Medium Blue
- 1/8 yard – 41853-4 Medium Blue
- 1/3 yard – 41858-2 White
- 1/8 yard – 41855-1 Dark Blue
- ¼ yard – 41857-1 Dark Blue
- 1/8 yard – 41855-3 Light Blue
- 1/8 yard – 41854-1 Dark Blue
- 1/8 yard – 41853-3 Light Blue
- ¼ yard – 41852-1 Dark Blue
- 1/8 yard – 41858-3 Light Blue
- 5 yards – 41852-1 Dark Blue



41852-3 Light Blue



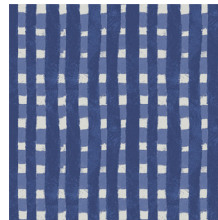
41852-2 White



41856-1 Dark Blue



41856-3 Light Blue



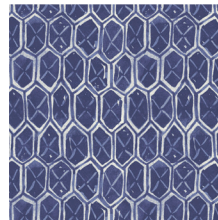
41853-1 Dark Blue



41854-3 Light Blue



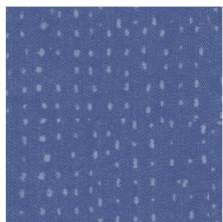
41857-3 Light Blue



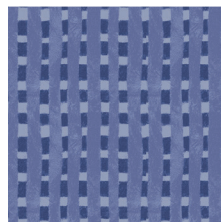
41858-1 Dark Blue



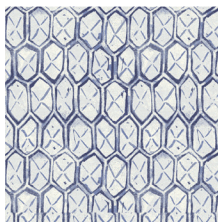
41855-4 Medium Blue



41856-4 Medium Blue



41853-4 Medium Blue



41858-2 White



41855-1 Dark Blue



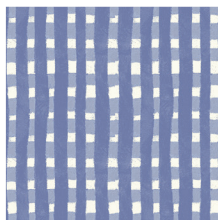
41857-1 Dark Blue



41855-3 Light Blue



41854-1 Dark Blue



41853-3 Light Blue



41852-1 Dark Blue



41858-3 Light Blue



41852-1 Dark Blue



WINDHAM FABRICS

www.windhamfabrics.com

Sky High

Page 3

Cutting Instructions:

Fabric A: Leaves – Light Blue

- Cut six 6 ½" x WOF strips. Sew the strips together end to end with diagonal seams and cut three 6 ½" x 72 ½" strips.
- Cut three 2 ½" x WOF strips. Sub-cut the strips into sixteen 2 ½" x 6 ½" strips.

Fabric B: Leaves – White

- Cut four 6 ½" x WOF strips. Sew the strips together end to end with diagonal seams and cut two 6 ½" x 72 ½" strips.

Fabric C: Rain Drops – Dark Blue

- Cut eighteen 1 ½" x WOF strips. Sew the strips together end to end with diagonal seams and cut ten 1 ½" x 72 ½" strips.
- Cut four 3 ½" x WOF strips. Sew the strips together end to end with diagonal seams and cut two 3 ½" x 64 ½" strips.

Fabric D: Rain Drops – Light Blue

- Cut two 2 ½" x WOF strips. Sub-cut the strips into ten 2 ½" x 6 ½" strips.
- Cut eight 2 ½" x WOF strips for the binding.

Fabric E: Lines of Squares – Dark Blue

- Cut one 2 ½" x WOF strip. Sub-cut the strip into four 2 ½" x 6 ½" strips.

Fabric F: Plants – Light Blue

- Cut two 2 ½" x WOF strips. Sub-cut the strips into ten 2 ½" x 6 ½" strips.

Fabric G: Lines – Light Blue

- Cut two 2 ½" x WOF strips. Sub-cut the strips into ten 2 ½" x 6 ½" strips.

Fabric H: Diamonds – Dark Blue

- Cut one 4 ½" x WOF strip. Sub-cut the strip into six 4 ½" x 6 ½" strips.

Fabric I: Suns – Medium Blue

- Cut one 2 ½" x WOF strip. Sub-cut the strip into four 2 ½" x 6 ½" strips.

Fabric J: Rain Drops – Medium Blue

- Cut one 2 ½" x WOF strip. Sub-cut the strip into six 2 ½" x 6 ½" strips.

Fabric K: Lines of Squares – Medium Blue

- Cut one 2 ½" x WOF strip. Sub-cut the strip into four 2 ½" x 6 ½" strips.



WINDHAM FABRICS

www.windhamfabrics.com

Sky High

Page 4

Cutting Instructions - Continued:

Fabric L: Diamonds – White

- Cut one 4 ½" x WOF strip. Sub-cut the strip into four 4 ½" x 6 ½" strips.
- Cut two 2 ½" x WOF strips. Sub-cut the strips into ten 2 ½" x 6 ½" strips.

Fabric M: Suns – Dark Blue

- Cut one 2 ½" x WOF strip. Sub-cut the strip into six 2 ½" x 6 ½" strips.

Fabric N: Lines – Dark Blue

- Cut one 4 ½" x WOF strip. Sub-cut the strip into six 4 ½" x 6 ½" strips.

Fabric O: Suns – Light Blue

- Cut one 2 ½" x WOF strip. Sub-cut the strip into six 2 ½" x 6 ½" strips.

Fabric P: Plants – Dark Blue

- Cut one 2 ½" x WOF strip. Sub-cut the strip into six 2 ½" x 6 ½" strips.

Fabric Q: Lines of Squares – Light Blue

- Cut one 2 ½" x WOF strip. Sub-cut the strip into six 2 ½" x 6 ½" strips.

Fabric R: Leaves – Dark Blue

- Cut one 4 ½" x WOF strip. Sub-cut the strip into four 4 ½" x 6 ½" strips.

Fabric S: Diamonds – Light Blue

- Cut one 2 ½" x WOF strip. Sub-cut the strip into six 2 ½" x 6 ½" strips.

Backing: Leaves – Dark Blue

- Cut two 86" x WOF strips. Sew the strips together and trim to 72" x 86" for the pieced back.



WINDHAM FABRICS

www.windhamfabrics.com

Sky High

Page 5

Block Assembly:

1. Follow Column One illustrations and sew thirty-one assorted strips together lengthwise to make one Column One. Repeat to make a second Column One.
2. Follow Column Two illustrations and sew thirty-one assorted strips together lengthwise to make one Column Two. Repeat to make a second Column Two.

Quilt Assembly

Refer to the Quilt Layout while assembling the quilt top:

3. Sew ten 1 1/2" x 72 1/2" Fabric C strips, three 6 1/2" x 72 1/2" Fabric A strips, two Column Ones, two 6 1/2" x 72 1/2" Fabric B strips and two Column Twos together lengthwise to make the quilt top.
4. Sew one 3 1/2" x 64 1/2" Fabric C strip to the top and to the bottom of the quilt top.
5. Layer and quilt as desired.
6. Sew the eight 2 1/2" x WOF Fabric D strips together, end to end with 45-degree seams, to make the binding. Fold this long strip in half, lengthwise with wrong sides together, and press.
7. Bind as desired.

Column One
make 2

A
E
F
G
H
I
D
A
J
F
G
K
L
D
A
J
F
H
A
E
F
G
I
L
D
A
J
F
H
G
K

Column Two
make 2

M
G
N
O
P
L
Q
R
S
A
D
M
L
N
O
P
L
Q
R
S
A
D
M
L
O
P
N
L
Q
S
A

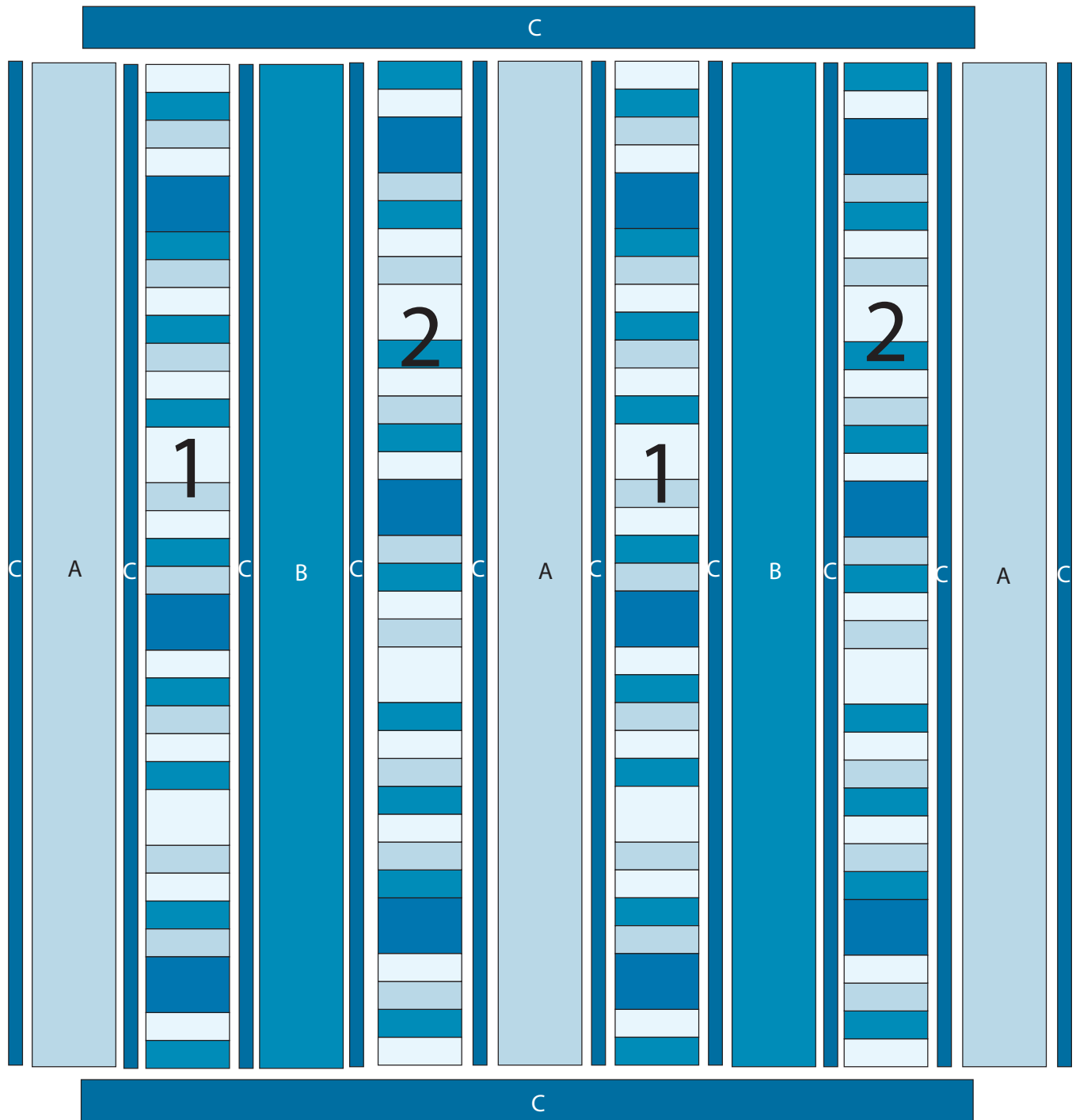


WINDHAM FABRICS

www.windhamfabrics.com

Sky High

Page 6



Quilt Layout

Be sure to visit www.windhamfabrics.com to see the complete collection and to download this and other FREE Projects



WINDHAM FABRICS

www.windhamfabrics.com